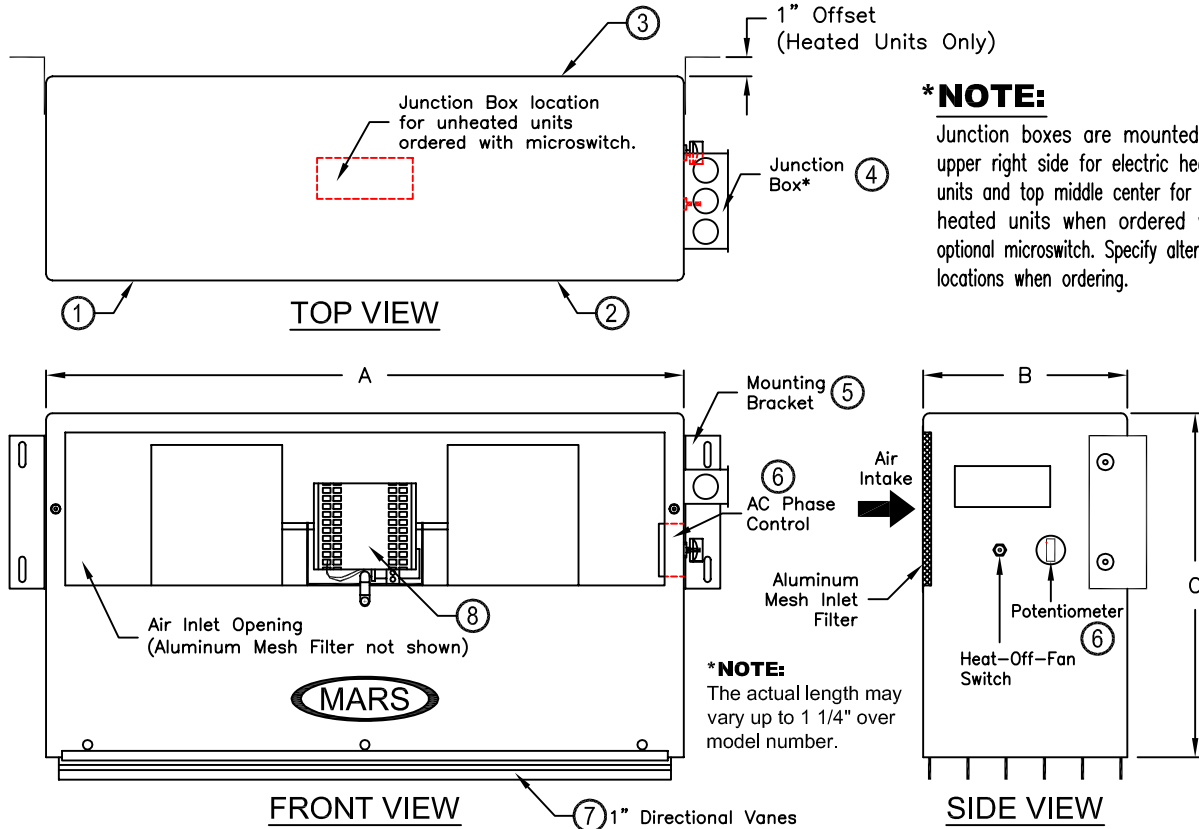



SERVICE WINDOW MODELS

(EW25) ELECTRIC HEATED & (W-25) UNHEATED



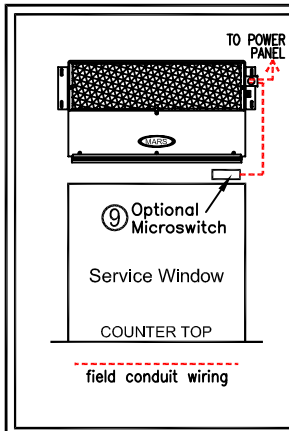
NOTES:

- ① This product is designed to comply with the National Electric Code (NEC) and the Unheated Models are CUL and UL Listed.
- ② All units have a self contained one piece molded white high density polyethylene cabinet. Cabinets feature a self-extinguishing characteristic and are resistant to high humidity, chemical and climate exposures.
- ③ Cabinet has sufficient strength for fastening to wall on both ends without intermediate support.
- ④ Electrical junction boxes are used for all electric heated units and unheated units ordered for a microswitch application. Standard unheated units have an 8 ft., three conductor cord and plug.
- ⑤ Offset mounting brackets with (2) mounting slots on each side 3/4" x 1/4". Brackets for unheated W-25s are flush to the back wall and are not offset.
- ⑥ AC phase control and heat-off-fan switch are only used for the electric heated EW-25 models.
- ⑦ Units is to be installed such that air flow is unobstructed. Air discharge nozzle containing adjustable air directional vanes with 40° sweep front to back.
- ⑧ Continuous duty, direct drive, variable speed, double shaft motor with automatic thermal overload protection. Overload protects motor from burnout minimizing costs.
- ⑨ Optional microswitch is field installed and is to be wired to the terminal block in panel. Switch to be mounted such that air curtain turns on as door starts to open.

C  US (UNHEATED ONLY)
LISTED

W-25 UNHEATED MODEL		
WIDTH* (A)	DEPTH (B)	HEIGHT (C)
25"	8 1/2"	10"

EW-25 ELECTRIC HEATED MODEL (4kW)		
WIDTH* (A)	DEPTH (B)	HEIGHT (C)
25"	8 1/2"	17"



1. Connect supply voltage from power panel to junction box.
2. Optional microswitch field installed and is to be wired in series with the hot line.

PROJECT	MODEL NO.
LOCATION	DRAWING NO.
ARCHITECT	DATE
ENGINEER	SHEET OF
	DRAWN BY
	CHECKED BY
	PROJECT NO.

MARS
Air Doors
BRAND AIR CURTAIN

14716 S. BROADWAY • GARDENA, CA 90248
Phone: 310-532-1555 • 800-421-1266 • Fax: 310-324-3030
WEB SITE: www.marsair.com • E-MAIL: marsinfo@marsair.com

EW-25, W-25 SERVICE (TAKE-OUT) WINDOW MODELS

SW4FX 4/6/07 WCD

JOB: _____ **ARCHITECT/ENGINEER:** _____ **DRWG.:** _____
CONTRACTOR: _____ **SHEET** ____ **of** ____ **DATE:** _____

UNHEATED W-25 SPECIFICATIONS

MARK	UNHEATED MODEL	NO. REQ'D	LENGTH	WEIGHT (LBS)	MOTOR FAN DATA						REMARKS
					HP 3400 RPM	VOLTAGE	FLA (AMPACITY) SINGLE PHASE		Max FPM at Nozzle	Max CFM at Nozzle	
							115V	208V 240V			
	W-25		25	20	1/20		2.8 (3.5)	1.3 (1.7)	1400	1900	

ELECTRIC HEATED EW-25 SPECIFICATIONS

MARK	ELECTRIC HEATED MODEL	NO. REQ'D	LENGTH	WEIGHT (LBS)	MOTOR, HEATER AND FAN DATA							REMARKS	
					HP 3400 RPM	VOLTAGE	TEMP. RISE °F	HEAT INPUT kW	FLA (AMPACITY) SINGLE PHASE		Max FPM at Nozzle		Max CFM at Nozzle
									208V	240V			
	EW-25		25	23	1/20		6.6	4	22.0 (27.5)	19.0 (23.8)	1400	1900	

AIR VELOCITY

Shall be no less than 600 feet per minute across the entire opening of the service window measured two feet above the counter.

APPROVALS

Unheated air curtain model W-25 shall be Underwriters Laboratory and Canadian Underwriters Laboratory Listed and shall meet the requirements of the National Electric Code (NEC).

CABINET

Housing shall be manufactured of one piece molded high impact PolyMars®, resistant to high humidity and all chemical and climatic conditions, with a washable aluminum mesh filter.

MOTORS AND BLOWER WHEELS

Motor shall be suitable for continuous heavy duty operation, engineered to provide many years of maintenance free service. The motor shall contain lifetime pre-lubricated sealed ball bearings, resilient mounted and protected by an automatic thermal overload switch.

INSTALLATION

Air curtains shall be provide with attached mounting brackets for easy installation over pass-thru window.

ELECTRIC WIRING

Unheated Units –An 8 ft., three wire cord and plug standard. Units ordered with optional microswitch also include factory mounted junction box on top center of unit. optional microswitch includes junction box factory mounted on top center of unit.

Electric Heated Units –Junction box mounted on upper right hand side of unit standard. Variable speed controller and Heat/Off/Fan switch included. Units contain 4000 watt coil with 13,700 Btu/Hr., protected with manual reset thermal overload switch.

GUARANTEE

Shall be five years for unheated units and 18 months for electric heated units.

An equipment specification can be prepared by combining the standard features with the checked boxes below indicating the selection of the optional features.

OPTIONAL FEATURES

When checked below, the air curtain will be supplied with the following special features.

Control Panel (Shipped Loose)

Door switch (20 amp) for automatic on/off control. turns air curtain on when door is opened and off when door is closed. (Control Panel Required)

Field Installed

Plunger type Roller type

Speed Controller with On/Off Switch (Heated Units Only)

MADE WITH PRIDE IN THE U.S.A.

EW-25, W-25 SERVICE (TAKE-OUT) WINDOW MODELS