

JOB:

ARCHITECT/ENGINEER:

DRWG.:

CONTRACTOR:

SHEET \_\_\_ of \_\_\_ DATE:

MOTOR FAN DATA

Table with columns: MARK, MODEL NUMBER, OVERALL LENGTH (INCHES), WEIGHT (LBS), NUMBER OF MOTORS, MOTOR (AMPS, INPUT KW), HEATER (AMPS, THREE PHASE), TEMP RISE, Max FPM at Nozzle, Max CFM at Nozzle, REMARKS. Rows include models like ELPV30, ELPV36, ELPV42, etc.

EQUIPMENT SPECIFICATIONS - Standard Features

GENERAL Air curtain shall be a Mars® Air Doors brand air curtain: LoPro Variable Speed Commercial Electric Heated.

APPROVALS Air curtain shall meet the requirements of the National Electric Code. (N.E.C.) and ETL certified for US & Canada.

CABINET Cabinet shall be a self contained one piece housing with sufficient strength for fastening to wall on both ends without intermediate support.

ELECTRIC HEATER COIL The heating coils shall be an open coil type for rapid temperature rise to be located in the air curtain intake directly in the air stream.

MOTORS AND BLOWER WHEELS Motor(s) shall be totally enclosed air over (TEAO) type suitable for continuous heavy duty, all angle operation.

ELECTRICAL WIRING Unit supplied with 1/2" Conduit Knockouts.

HEATER

\* - 17% Reduction in Performance on units with 50HZ.
\*\* - For Ampacity Multiply FLA X 1.25
An equipment specification can be prepared by combining the standard features with the checked boxes below indicating the selection of the optional features.

OPTIONAL FEATURES

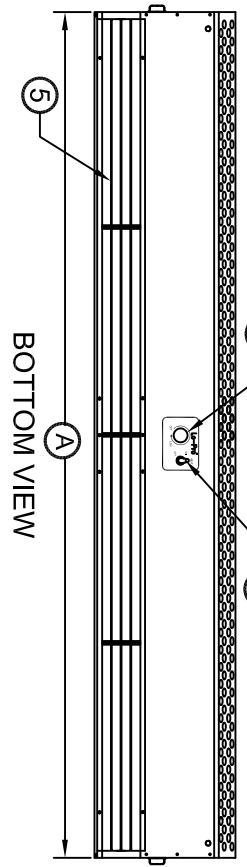
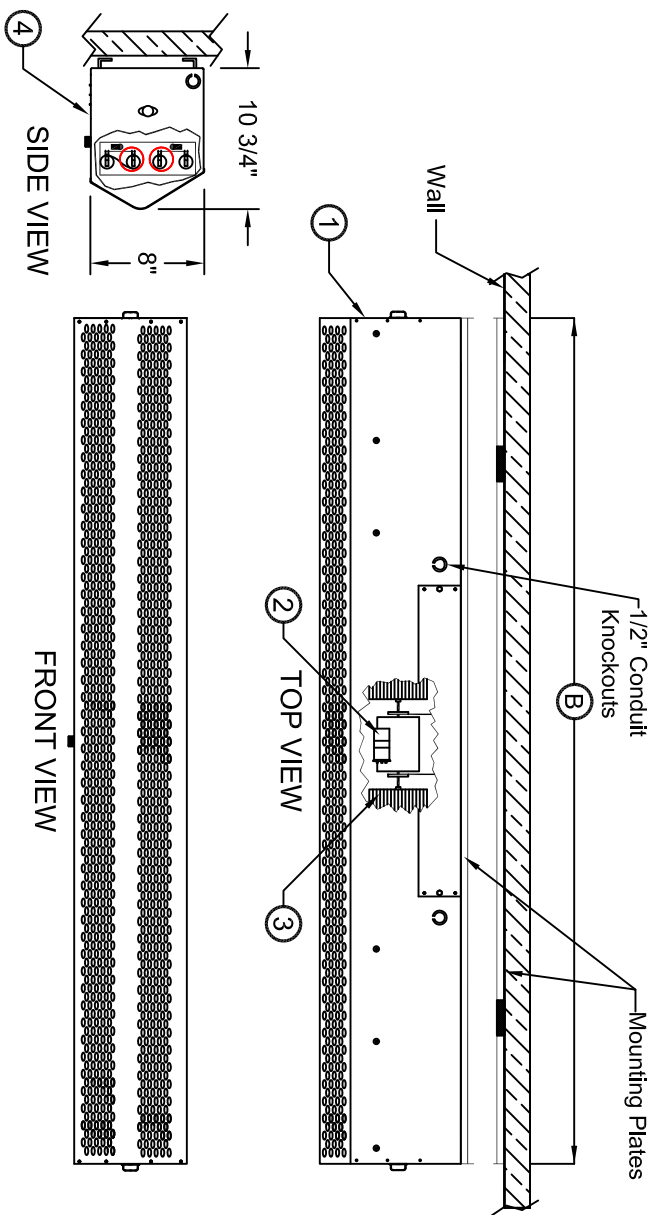
- Control Panel required for units above 1/2 HP and all 3 phase.
Adjustable Time Delay (6 sec to 20 min)
3/8" Washable Aluminum Mesh Filter
Walk-In Installations Kit
Optional Colors
Pearl White Titanium Silver Spartan Bronze

MADE WITH PRIDE IN THE U.S.A.

LoPro VARIABLE SPEED ELECTRIC HEATED COMMERCIAL MODELS

**NOTES:**

- ① This product is designed to meet the National Electric Code (NEC).
- ② Continuous duty, direct drive, variable speed, double shaft motors with automatic thermal overload protection. Overload protects motor from burnout, minimizing maintenance costs.
- ③ Blower wheels are rust proof and dynamically balanced to provide quiet operation, while maintaining high air velocity.
- ④ Low profile appearance. Overall height is 7 1/2" and overall depth is 10 3/4".
- ⑤ Air directional vanes, with 40° sweep front to back, compensates for drafts.
- ⑥ Mounted adjustable speed controller knob allows air velocity to meet a wide range of field conditions. Units greater than 72" are double units joined with a 1-1/2" mounting bracket located in the center. The speed controller will be located on the right hand unit and control both units.
- ⑦ Heat on/off toggle controls for electric coil
- ⑧ Normally closed door limit switch(es) is optional and field installed. Switch to be mounted so the air curtain turns on as the door begins to open. Two door limit switches shown for double door. For single door (1) Door limit switch will be installed.



MODEL NUMBER	UNIT LENGTH (A)
ELPV30	30'
ELPV36	36'
ELPV42	42'
ELPV48	48'
ELPV60	60'
ELPV72	72'
ELPV84-2	85 1/2'
ELPV96-2	97 1/2'
ELPV108-2	109 1/2'
ELPV120-2	121 1/2'
ELPV144-2	145 1/2'

### AIR CURTAIN

**TYPICAL INSTALLATION**

- 1- Install Mounting plate(s) using the pre-drilled holes.
- 2- Securely attached cabinet to mounting plate using tabs as guides, when fully inserted secure with (2) #10-32 Pan Head Screws.
- \*CAUTION\***: Unit to be mounted with the lowest moving part at least 7 Feet above floor or grade level.
- 3- Install optional door limit switch(es) to door header.
- 4- Plug in unit using the 3-wire cord / plug supplied.

PROJECT	MODEL NO.
LOCATION	DRAWING NO.
ARCHITECT	DATE
ENGINEER	SHEET OF
	DRAWN BY
	CHECKED BY
	PROJECT NO.

**MARS**  
Air Doors  
BRAND AIR CURTAIN

14716 S. BRADWAY • GARDENA, CA 90248  
 Phone: 310-532-1555 • 800-421-1266 • Fax: 310-324-3030  
 WEB SITE: www.marsoair.com E-MAIL: info@marsoair.com